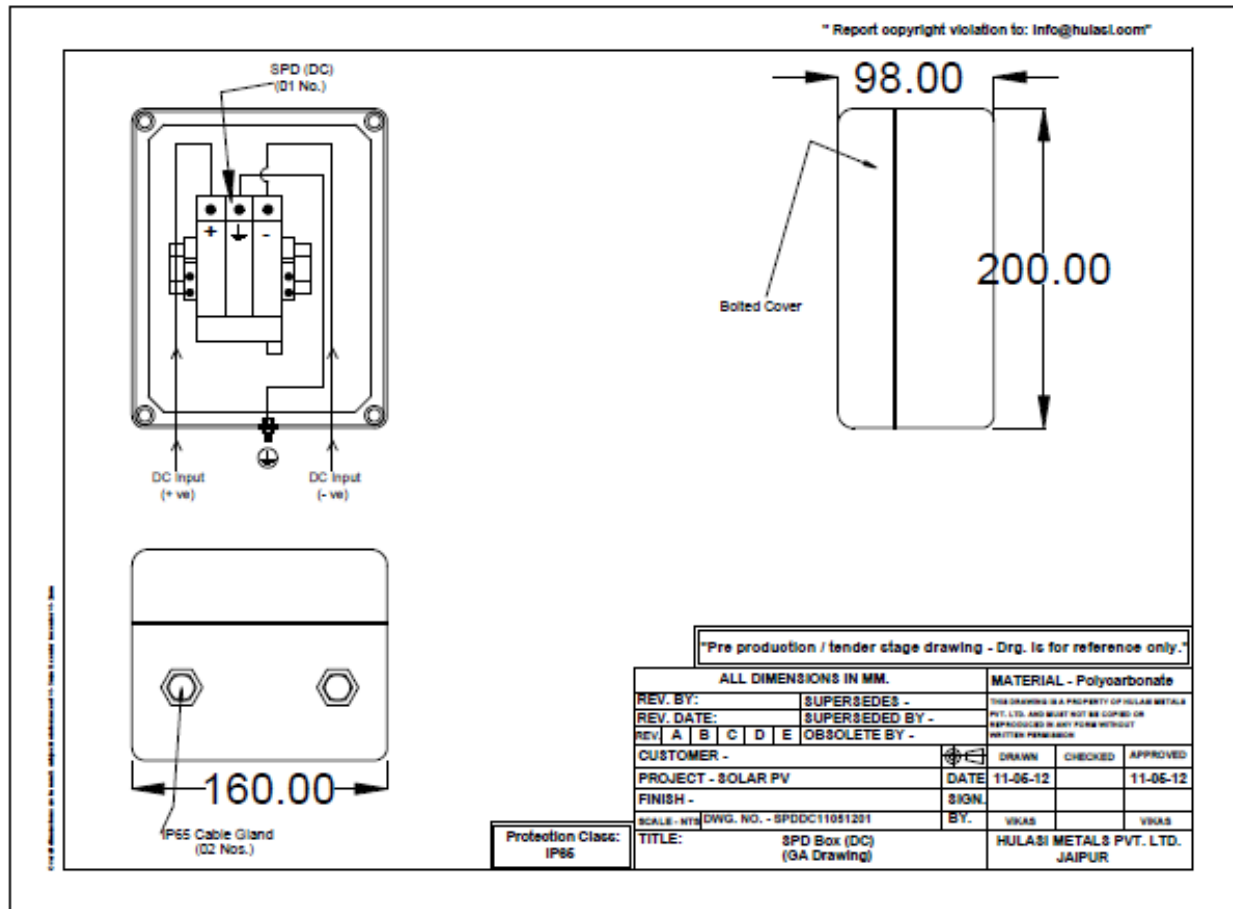


## SPD for DC side of the Solar PV plant



## SPD for DC side of the Solar PV plant

Ref.:SPD\_DC\_500V/600V/1000V

- 1) MOC: Polycarbonate
- 2) Ingress Protection: IP 65
- 3) Wall mounting hardware included
- 4) 01 No. SS Earth Stud for earthing
- 5) Bolted cover
- 6) 02 Nos. IP 68 Cable glands at bottom for DC +ve and DC -ve.
- 7) 01 No. SPD for DC 500V with 3 connection for +ve, -ve and earth
- 8) Other accessories eg. Din rail, MCB stoppers, labels included.
- 9) IP67 vent plug [enclosure breather]

Optional:

SPD for PV plants with operating voltage up to 600V and 1000V DC can be provided.