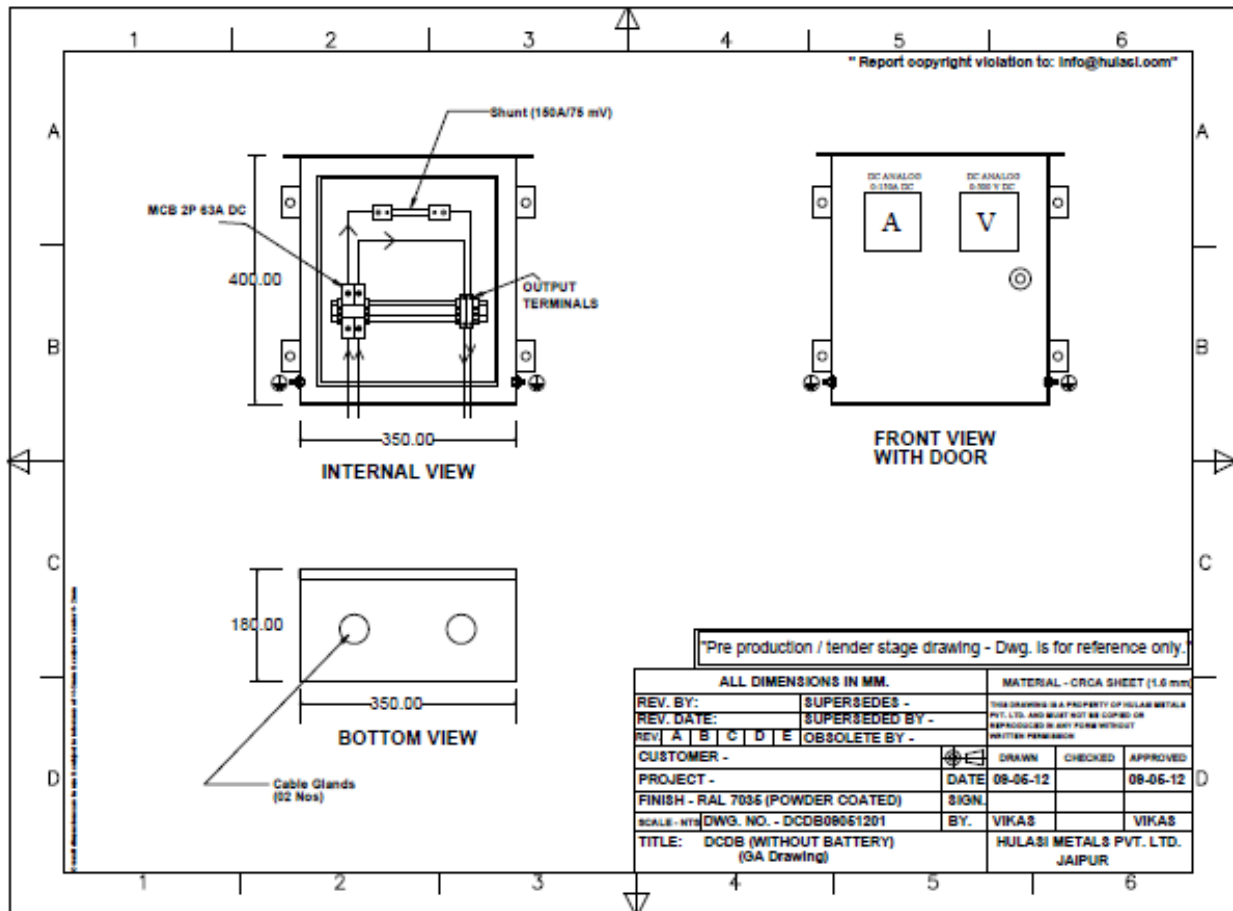


DCDB for solar PV plant



DCDB for solar PV plant

Ref.: DCDB_T1

- 1) MoC: 1.6mm thick CRCA sheet steel
- 2) Finish: Light Grey 7035 upto 60 microns
- 3) Ingress Protection: IP 21
- 4) Extended canopy at top
- 5) Wall mounting bracket and hardware
- 6) 02 Nos. SS Earth Stud at side sheets for earthing
- 7) Hinged door with lock
- 8) 02 Nos. Single compression Cable glands at bottom for inverter input and output cables of 2Cx16 Sqmm.
- 9) 01 No. DP 63A, 500V DC MCBs for input.
- 10) 02 Nos. Terminals for Output upto 16 Sqmm wire termination.
- 11) 01 No. Shunt operated DC Analog ammeter 0-150A with shunt 150A/75mV.
- 12) 01 No. DC Analog Voltmeter 0-500V DC