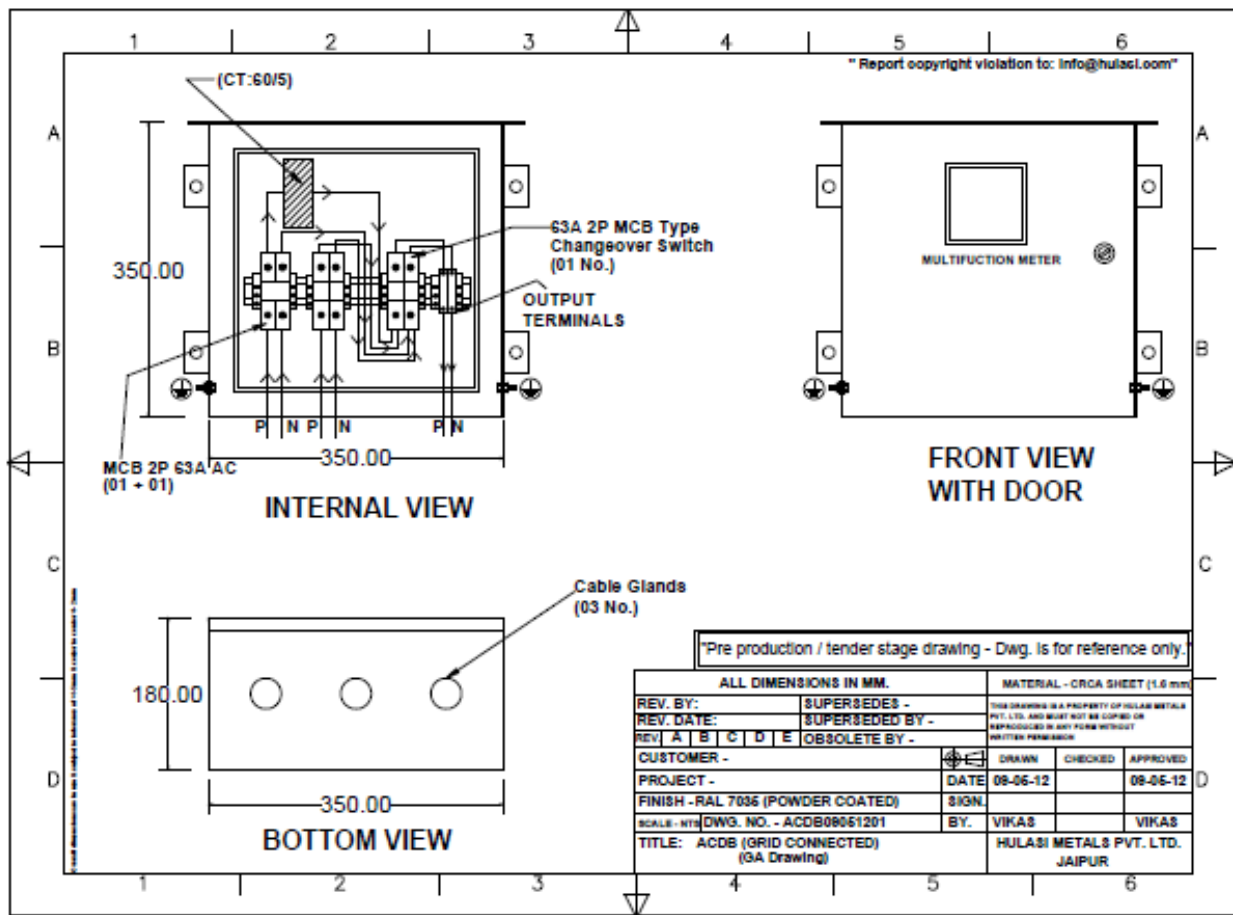


Single phase ACDB [with Grid switchable connection] for solar PV plant



Single phase ACDB [with Grid switchable connection] for solar PV plant

Ref#ACDB_T1

- 1) MoC: 1.6mm thick CRCA sheet steel
- 2) Finish: Light Grey 7035 upto 60 microns
- 3) Ingress Protection: IP 21
- 4) Extended canopy at top
- 5) Wall mounting bracket and hardware
- 6) 02 Nos. SS Earth Stud at side sheets for earthing
- 7) Hinged door with lock
- 8) 03 Nos. Single compression Cable glands at bottom for inverter input, grid input and output cables of 2Cx16 Sqmm.
- 9) 02 Nos. 63A DP AC MCBs for Inverter and Grid supply as inputs.
- 10) 01 No. MCB type Changeover switch 63A DP Input selection.
- 11) 02 Nos. Terminals for Output upto 16 Sqmm wire termination.
- 12) 01 No. CT operated Single phase Digital Multifunction meter to measure V,I,Hz,kW,kWH, PF etc with CT 60/5A.
- 13) Other accessories eg. Din rail, MCB stoppers, labels included.
- 14) Internal Wiring with lugs, ferrules and dressing included